

GSM-R test system



TTS-S75a GPS

Test, approve, monitor and optimize GSM-R networks with comprehensive test systems

GSM-R technology for railways

TTS-S75a GPS

The TTS-S75a GPS is the right network for GSM-R in-depth air-interface testing and optimization. The PC application TrioTrace2 enables to control and view the measurement results live on PC.



Technical data

Dimensions	103 x 47 x 18.5 mm [LxWxH]
Weight	99 g
Battery	820 mAh Li-Ion
Operation time	300 hrs. standby 5 hrs. talk
Display	132x176 pixels TFT
Camera	1.3 Megapixel sensor
Data storage	24 MB internal, RS-MMC up to 1GB
Interfaces	Serial, IrDA, USB 2.0, Bluetooth, connector for external antenna by using a phone cradle, 2 virtual serial ComPorts via USB for concurrent trace information and control by AT commands or data transfer
Card reader	Mini-SIM
Audio	Integrated hands free
Temperature range	-10°C to +55°C

ASCI / EIRENE

VGCS, VBS, UUS1, eMLPP
FN, PFN, REC

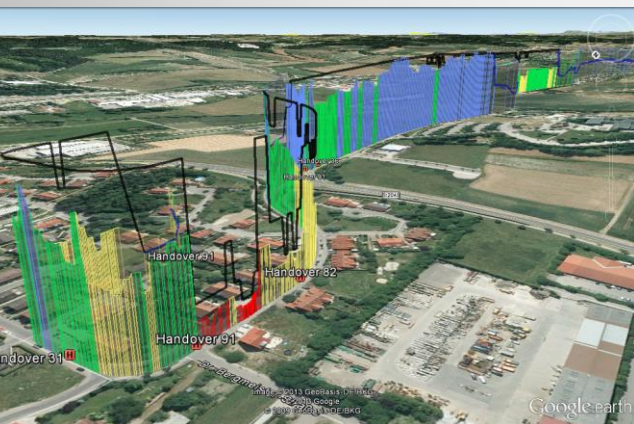
ETCS L2 QoS

QoS / subset of values defined in the ERTMS/GSM-R QoS test specification [QoS Working Group, v1.2.i, 06-07-2006]

Transfer delay of user data frames

Round trip delay evaluation [optional loopback terminal required]

Data transmission interference and data throughput



Part no.

TTS-S75a GPS 4095

System / Standards

Frequency bands	GSM-R/EGSM900/GSM1800/GSM1900
RF output power	Class 4 [2 W] for GSM-R/EGSM900 Class 1 [1 W] for GSM1800/GSM1900
Audio	Triple-rate codec for HR, FR and EFR AMR for non ASCII apps supported
GPS	External Bluetooth® GPS receiver during test monitor mode supported

Data services

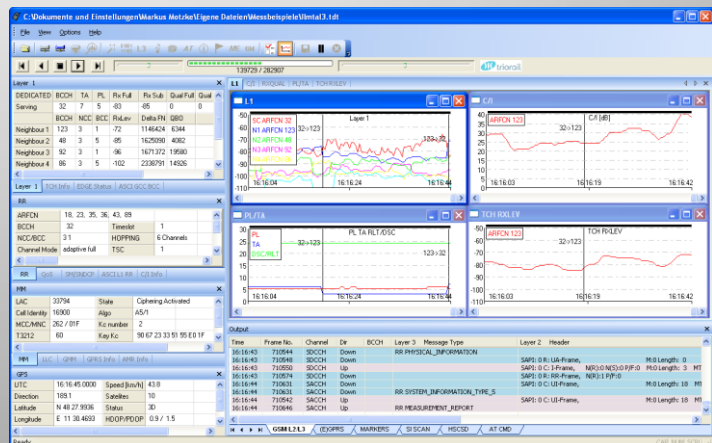
GPRS class 10 and EDGE class 10	
CSD and Fax group 3, class 2	
Messaging	MMS, EMS, SMS, CB, IM
Internet access	WAP 2.0
E-mail client	SMTP, POP3

Test system

Layer 1	Serving/neighbor cell BCCH, ARFCN, Cell ID RX LEVEL, timing Advance, power level
Radio Resources	ARFCN, channel type, speech codec, time slot, network and base station color code
Messaging	GSM Layer 2/3, GPRS RLC/MAC, GMM/SM RLC/MAC, LLC, GMM, SM/SNDP, TBF, RLC mode, CS, NCO
Mobility Management	Cell ID, LA, MCC/MNC, TMSI, ciphering
QoS	GSM FER, handover, call set up GPRS Data rates of LLC and RLC/MAC
Forcing	BCCH, cell reselection, handover, channel, band, power class, GPRS, time slot, TCH, ASCII
Scanning	Single ARFCN, set of frequencies, band, system information

TrioTrace2 PC application

- TrioTrace2 SW to visualize the measured data customizable windows
- Trace log recording; replay for post analyzing
- Export of stored trace files in different formats



Triorail & Co. KG > Luitpoldstrasse 2a > 85276 Pfaffenhofen > Germany > www.triorail.com > info@triorail.com
The manufacturer reserves the right to change the product specification without notice.