

LOCOSYS



GNSS

ALL IN ONE SOLUTION



Saving Cost

Saving Space

Saving Effort



GSM / GPRS



Bluetooth

The World's Smallest GNSS, GSM/GPRS, Bluetooth Module

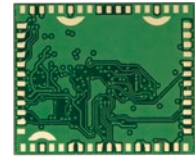
GGB-1916

LOCOSYS
www.locosystech.com

ALL IN ONE SOLUTION

GGB-1916

The World's Smallest GNSS, GSM/GPRS, Bluetooth Module



19 x 16 x 1.9 mm

- > GGB-1916 module is a versatile module that integrates GNSS, 2.5G GSM/GPRS and classic Bluetooth in a miniature QFN (Quad Flat No leads) form factor. Its built-in highly integrated power management units and efficient DC/DC converters make not only switch individual features of the power by software commands but also perform brilliant low power consumption.

All parts of RF functions are included, such as the transceiver and power amplifier of GSM, band pass filter of Bluetooth as well as SAW filter and LNA of GNSS. No abstruse RF knowledge is required. Just connect antennas to it. Besides, all functions of GNSS, A-GNSS, GSM and Bluetooth are software controlled via single UART port. These ease the use, shorten the development time and make the fast time to market.

> Product Features

GNSS Feature	Specifications are subject to change without notice.
GPS, GALILEO, QZSS	L1 1575.42MHz, C/A code
GLONASS	L1 1598.0625MHz ~ 1605.375MHz, C/A code
SBAS	WAAS, EGNOS, MSAS, SDCM, GAGAN <ul style="list-style-type: none">● EPO (Extended Prediction Orbit) data service
A-GNSS	<ul style="list-style-type: none">● EASY: Embedded Assist System which accelerates TTFF by predicting satellite navigation messages from received ephemeris.
Channels	Support 99 channels (33 tracking, 99 acquisition)
Update rate	1 Hz default, up to 10 Hz
Sensitivity	<ul style="list-style-type: none">● Tracking: up to -165 dBm● Acquisition: up to -148 dBm
Antenna	Passive or active antenna support
GSM/GPRS Feature	
Frequency bands	Quad-band GSM 850/E-GSM 900/DCS 1800/PCS 1900
Output power	<ul style="list-style-type: none">● Class 4 (2 W) for GSM 850 and E-GSM 900● Class 1 (1 W) for DCS 1800 and PCS 1900
GPRS connectivity	GPRS multi-slot class 12
Audio	Analog interface. Integrated maximum 0.8W high power class AB speaker amplifier.
SIM interface	Support SIM card: 1.8V, 3.0V
SMS	Text and PDU mode
Bluetooth Feature	
Output power	Class 1 (1 W)
version	Bluetooth specification 3.0



About

LOCOSYS

Founded in 2006, LOCOSYS is a R&D focused company with a very strong technical team as its backbone constantly propelling it forward as a leader in the GPS/GNSS market. All team members are highly experienced and have been engaged in the field of electronics, navigational communications and GPS related applications for many years. Our design capabilities and technical expertise in developing superior GPS products/modules keep us at the forefront of the GPS/GNSS market. LOCOSYS also provides GPS/GNSS related end-products and all are manufactured by ISO/TS 16949 certificated production line in Taiwan. Our numerous years of experience in the GPS market, outstanding product design capabilities, high-quality products, skillful technical service and worldwide network are our biggest assets.

